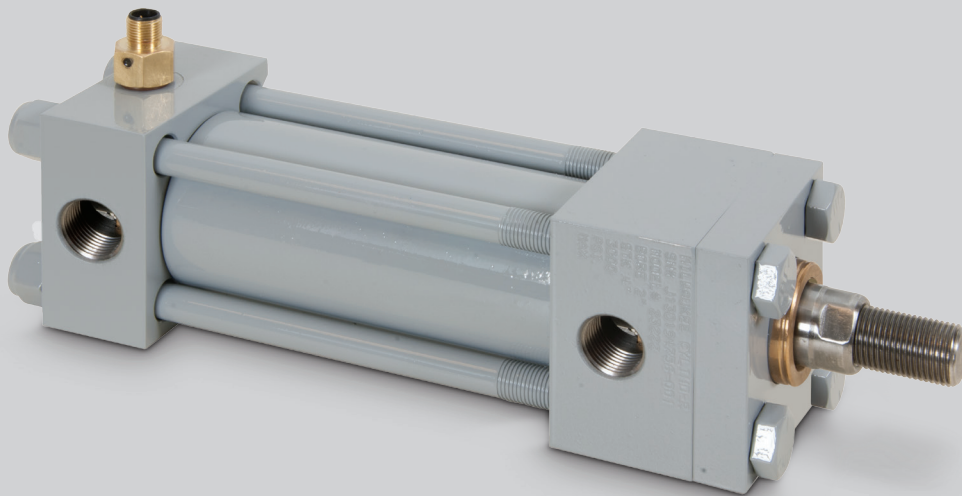


**milwaukee**  
*Cylinder*

Specials are Our Standard



# Internal Cylinder Temperature Switch



**Helps Extend Cylinder Life by sensing an over-heat condition — inside your cylinder**

Utilizes an industrial temperature switch in either end cap or both end caps, providing direct sensing of hydraulic fluid inside the cylinder.

**Designed for  
Industrial  
Environments**

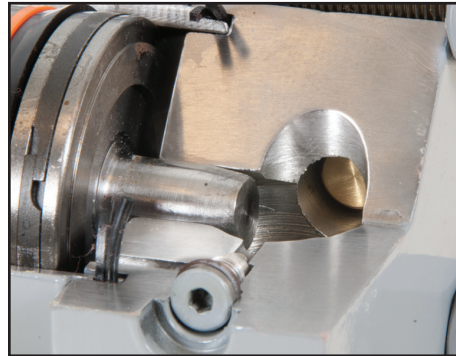
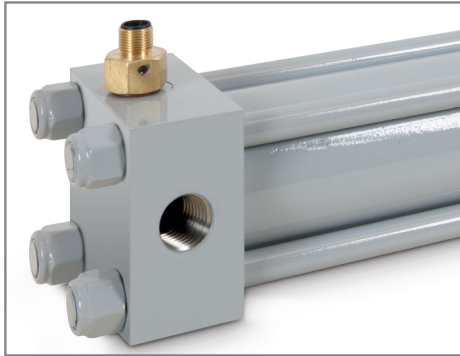


- Factory set temperature
- Can be installed on either or both end caps
- Economical
- Easy electrical interface

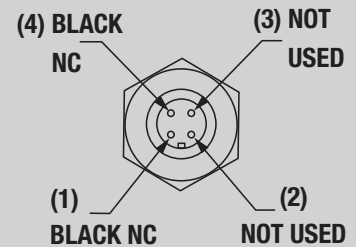
## Protect Your Investment: A Temperature Switch Helps Extend Cylinder Life

In many hydraulic systems, oil does not circulate back to the power unit for proper cooling, shortening cylinder life.

This temperature switch has direct contact with fluid inside the cylinder...the best location for the truest indication of cylinder temperature.



### PIN CONFIGURATION



### M12 Connector RSF-4/0.5M

Other electrical connectors available on request

Can be installed on either or both end caps and any available port position.

## Temperature Switch Features and Specifications

- Bi-metal immersion temperature switch
- NEMA 4, 13 rated
- Factory preset temperature
- Standard 150 °F rising (other temperatures available on request)
- Set-point tolerance: +/- 5 °F
- Direct action contacts / minimum hysteresis
- Circuit form: SPST-NC with Mirco M12 Connector
- Maximum pressure: 5000 psi
- Maximum temperature: 325 °F

Your *Milwaukee Cylinder* Distributor